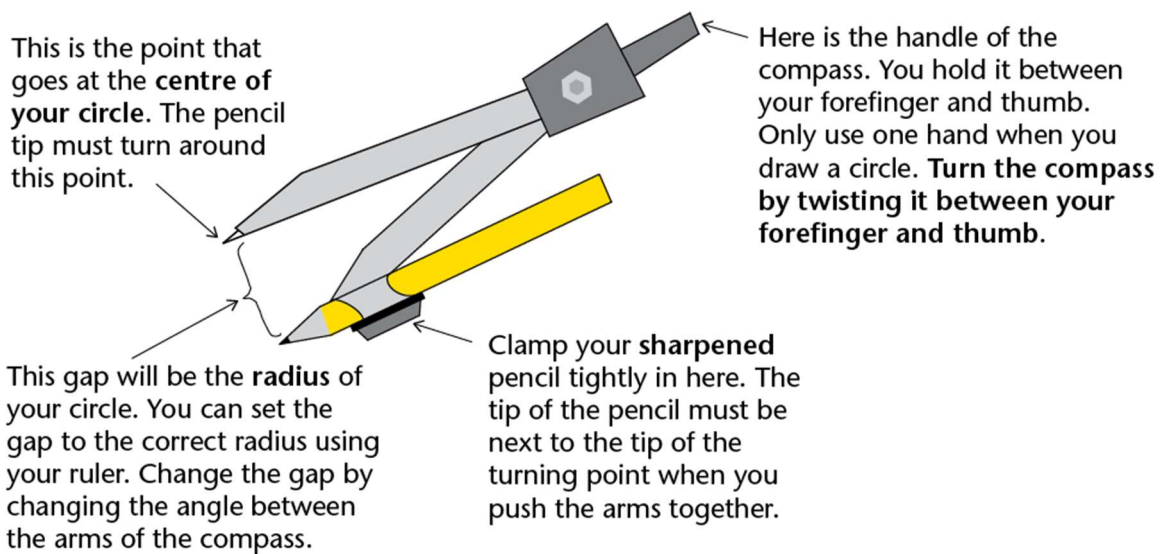
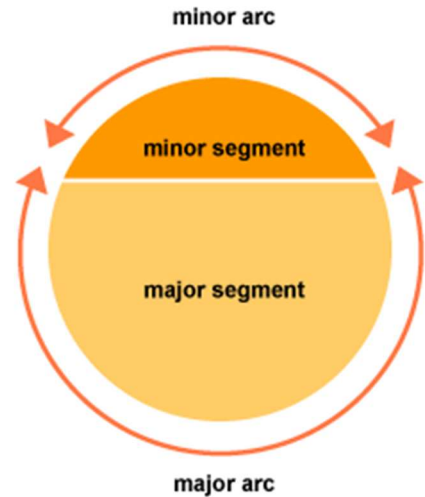
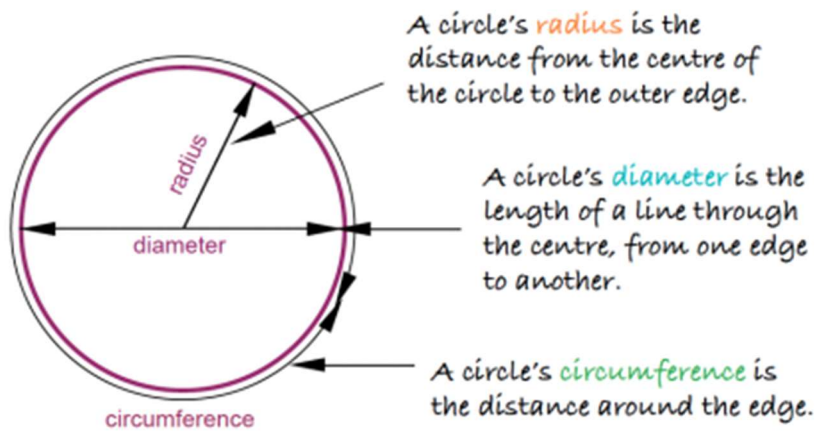


## How to use a maths compass

A compass enables you to draw accurate circles and arcs (section of the circumference). By being able to draw arcs you can then go onto constructing triangles, construct loci, and find regions.



### Setting up the compass

When setting up the compass it is important that the point of the pencil, and the point are level. This is done by placing the point of the compass on the table, and putting the pencil in the clamp and tightening the clamp.

### Drawing a circle

The distance between the point and the pencil is the radius. This means reading the question is important as it may require you to draw a circle with a given diameter.

1. Set up the compass
2. Open the compass the required distance (radius)
3. Place the point where you want the centre of the circle
4. Hold the compass at the top. **DO NOT HOLD THE PENCIL AS THIS CAN CHANGE THE RADIUS**
  - a. Place one hand on the paper to hold it still and turn the compass using the top of the compass with your other hand.

OR

- b. Hold the compass at the top with one hand and move the paper under the compass.

This will take practise. So start drawing circles of different sizes, then move onto

